

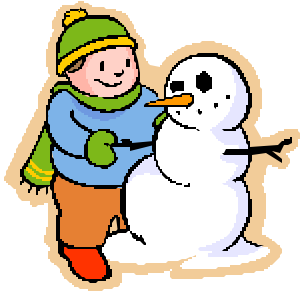


A CENTER FOR SOCIAL COMMUNICATION AND INTERACTION SKILL DEVELOPMENT AND SUPPORT

WEST METRO LEARNING CONNECTIONS, INC.

SERVING INDIVIDUALS WITH AUTISM SPECTRUM DISORDERS AND RELATED CONDITIONS

355 Second Street | Excelsior, MN 55331 | wmlearningconnections.com



Holiday Hoopla — December 2006

Friday Excellent Adventures

5 PM—9 PM

December 1—Rollerblading at the Dome

December 8 —Pizza and Movie (*Akeelah & The Bee*)
at the Center

December 15—Food Court & Holiday Shopping at
Eden Prairie Center

December 22—Snow Tubing at Elm Creek

\$150 ea. Plus activity fees and spending money

Saturday Escapades Plus!

Saturday Escapades Therapeutic Recreation

Plus! a 1/2 hr. social skills lesson each week

December 2: 1 PM to 6 PM—Horse drawn sleigh ride with
Santa, Christmas show at Excelsior Elementary, tree-
lighting ceremony and more! \$2 for materials

December 9: 12 Noon to 4 PM—*Mary Poppins* exhibit at
Macy's and snacks and crafts at WMLC \$2 for materials

December 16: 12 Noon to 4 PM—Holiday shopping at Eden
Prairie Center, and make and decorate holiday gift bags
and cards at WMLC Spending money & \$2 for materials

December 23: 12 Noon to 4 PM—Make & decorate holiday
ornaments and treats at WMLC \$5 for materials

December 30: 12 Noon to 4 PM—"Folkways of the
Holidays" at Historic Murphy's Landing
<http://www.threeriversparkdistrict.org/>
\$8.50 ages 12+, \$7 through age 11

\$240 ea. Plus activity fees and spending money

Amber's Craft Club & Marshall's Game Club

Saturdays

12 Noon—2 PM

Dec. 2, 9, 16, 23 & 30

Each craft session in-
cludes instruction and
planning time. You will
join Amber in creating a
variety of fun arts &
crafts projects that you
can take home and
share.

Each game session in-
cludes instructional
time, game etiquette,
sportsmanship and
guided playing time.

(Time allotted: Crafting:
as long as it takes—up to
45 min. Remaining time
will be spent playing
games.)

\$20 ea. Plus material fee

Workshops

Social Skills Measur-
ment & Evaluation
for Individual & Pro-
gram Development:
Mon., Dec. 4, 9—4

Social Skills Group
Implementation &
Facilitation Plus Spe-
cialized Proactive
Behavior Mgmt.:

Tues., Dec. 5, 9-4

\$150 per day or
\$275 for both days

10% discount for
groups of 3 or more.

Hotel Sleepover

December 9-10, 2006
5 PM—10 AM

Waterpark of America
includes a 10 Story White
Water Raft Ride, St. Croix
River Ride, Wave Pool and
more.

Enjoy over 90 games at
the Northern Lights Ar-
cade.

www.waterparkofamerica.com
and
www.grandlodgemn.com

Limited to 1st 12 participants



Pick up and drop off will
be at hotel unless special
arrangements are made.
\$175 plus meal(s)

Regular

Sleepover

5 PM—10 AM

December 16-17, 2006
\$150 plus meal

Arc SibShop

December 2, 2006

Video-Enhanced Social Skills Classes

5 PM—7 PM

Session I— Dec. 4 & 6, Session II—Dec. 5 & 7,

Session III—Dec. 11 & 13, Session IV—Dec. 12 & 14

A. Grades Kindergarten-3

1. Beginning Play Skills and Relationship Development Activities
2. Everybody Makes Mistakes.
3. I'm Telling, A Tattler's Tale

B. Grades 1-3

1. Managing and Communicating Emotions with the Five-Point Scale
2. A Kid's Guide to Feelings
3. Angry? Ten Ways to Cool Off

C. Grades 4-6

1. Managing and Communicating Emotions with the Five-Point Scale
2. Stress: I Can Handle It!
3. Handling Anger

D. Grades 5-7

1. Cool to Be Me: Self-Esteem
2. I Like Being Me: Self-Esteem
3. Supplemental Worksheets, Crafts, and Activities

E. Grades 6-8

1. What Would I Be Good At? Exploring Careers
2. Go, Go, Goals! How to Get There
3. Field Trips to Visit Different Work Places

F. Grades 9-12 (Taught by Debra Schipper. Special Permission Required.)

1. What Teens Want to Know About Sex
2. Teenage Sex: Resisting the Pressure

\$240 per two-night session—Please designate your session choice by Roman Numeral (I-IV) and your course selection by letter (A-F)

Please Note: All December activities will be based at the Excelsior Center

For additional information or to register call (952) 474-0227 or

e-mail info@wmlearningconnections.com